

KWP2000 PLUS ECU Flasher

OPERATION INSTRUCTIONS:

Install driver:

- Install the driver package to your notebook/pc.
- Connect the KWP2000 PLUS Flasher to a free USB port.
- At the window, point to the folder where you installed the driver package.
- Reboot.

How to READ data from a supported ECU:

- Connect the KWP2000 PLUS ECU Flasher to computer USB port and to the diagnostic port of the car
- Start the communication software in the computer.
- Turn ignition key to "ON" position. (Do not crank or start the engine).
- Select the ECU type you want to read/write from the given list.
- Select additional options (if needed)
- Click the READ button to read out the original data (where supported).
- Save the file to the Hard Disk, Edit or Forward it another folder

How to WRITE data to a supported ECU:

- Connect the KWP2000 PLUS ECU Flasher to computer USB port and to the diagnostic port of the car
- Start the communication software in the computer.
- Turn ignition key to "ON" position. (Do not crank or start the engine).
- Select the ECU type you want to read/write from the given list.
- Select additional options (if needed).
- Click the WRITE button and select the file you want to write
- Follow the instructions on screen
- Switch the ignition key to "OFF" position and wait for 10 seconds before starting the engine again.

Reading the ECU EEPROM chip



First choose the vehicle and type of the engine's ecu you want to read/write from the given list. If you have any doubt about the type of ECU, you can verify it from the program.



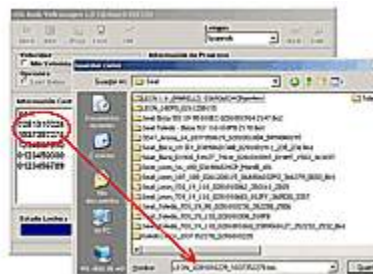
When the dialogue window appears just click on INFO tab and wait for the program to communicate with the ECU.



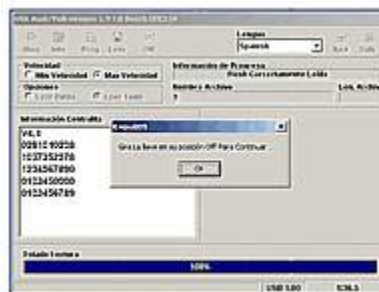
A moment later, the information about the ECU type will be shown. Just click on “READ” tab to assure that you will have a copy of the original file (in case there is some problem later).



When the program starts reading the ECU's chip, DO NOT INTERRUPT the process at this moment.



Choose where you want to save the original file and name it. To simplify your work, name it same as the numbers that appear in the window display on “Information of the ECU”.



Now the program will prompt you to turn the ignition key to “OFF” position. Do as instructed and then click the “OK” button.

Writing into the ECU EEPROM chip



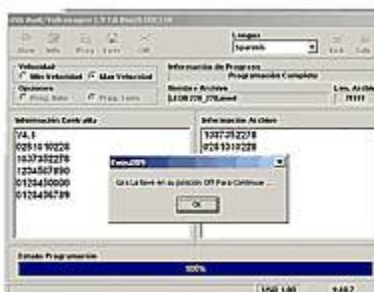
Choose the vehicle and type of the ECU (as in the "READ" process) click on INFO tab. OPEN the file prepared for your vehicle or ECU type.



From the display, on the right window you will see the reference of the ECU that corresponds to the open file. To confirm that this information matches with our ECU type. Verify the numbers in both windows are the same just to be on the save side.



If you are absolutely sure that everything you did is correct. Click on PROG tab, the system will now erase the ECU flash memory and program it with the new file. Please DO NOT INTERRUPT during this process.

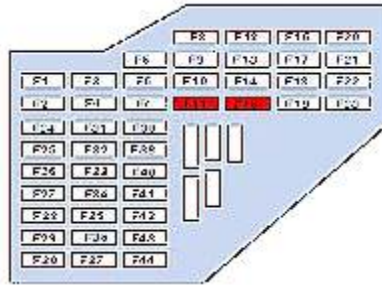


When it had finished writing, just turn the ignition key to "OFF" position and then confirm by clicking the OK button.

Wait for 10 seconds and it is done! Now you can enjoy the new ECU program.

NOTE:

For some cases, VAG cars (AUDI, VOLKSWAGEN, SEAT AND SKODA) before attempting to flash the ECU chip, the instruments panel must be de-activated. Open the fuse box cover; remove the 5A fuses as indicated in red (refer figure below). With the instruments panel power cut off you can try to access the ECU.



Inside view of the Fuse Box

Compatibility:

Supported Car Models and their ECU:

<u>ECU FAMILY</u>	<u>READ ORIGINAL FILE</u>	<u>PROGRAM TUNED FILE</u>
ALFA ROMEO JTS MED 7.1.1 EURO 3 (Boot Mode)	YES	YES
ALFA / FIAT BOSCH M 1.5.5 Euro2	NO	YES
ALFA / FIAT BOSCH ME3x - ME7x	YES	YES
ALFA / FIAT BOSCH ME2.1 EURO 2	NO	YES
ALFA / FIAT BOSCH EDC15C Euro2	YES	YES
ALFA / FIAT BOSCH EDC15C-7 Euro 3 Fase 1/2	YES	YES
AUDI/VOLKSWAGEN BOSCH EDC15x DIESEL	YES	YES
AUDI/VOLKSWAGEN BOSCH ME7X (Boot Mode)	YES	YES
BMW SIEMENS MS 41	YES	YES
BMW 2.0 D EDC15C	YES	YES
BMW 3.0 D EDC15	YES	YES
BMW BOSCH MOTRONIC M5.2.1B	YES	YES
BMW SIEMENS MS42	YES	YES
BMW SIEMENS MS43	YES	YES

CHRYSLER BOSCH EDC15C2	YES	YES
CITROEN / PEUGEOT BOSCH EDC15C2	YES	YES
CITROEN / PEUGEOT BOSCH ME 7.4.4	YES	YES
CITROEN / PEUGEOT/FIAT MARELLI MM48P	YES	YES
CITROEN / PEUGEOT BOSCH AS41	YES	YES
FERRARI 360 MODENA ME 7.3.1	YES	YES
FIAT IAW MARELLI 4EF/59F/5NF/MULTIJET	YES	YES
FIAT PUNTO BOSCH EDC15C-6 Euro 2/3	YES	YES
HONDA CIVIC BOSCH EDC15C-7	YES	YES
HYUNDAI EDC15C2	YES	YES
ISUZU DTI BOSCH EDC15M	YES	YES
MCC SMART Euro 2/3/4	NO	YES
MCC SMART EDC15C5	YES	YES
MINI BOSCH EDC15 DDE	YES	YES
MERCEDES CDI BOSCH EDC15C5 (29F400)	NO	YES
MERCEDES CDI BOSCH EDC15C6	YES	YES
NISSAN BOSCH EDC15C2	YES	YES
OPEL DTI BOSCH EDC15M	NO	YES
OPEL BOSCH ME 1.5.5	YES	YES
OPEL SIMTEC 70 (1.8 - 2.0)	YES	YES
OPEL SIMTEC 90 (1.6-2.0)	YES	YES
OPEL DELCO 1.7 DTI	YES	YES
OPEL BOSCH M 1.5.5 EURO 2	YES	YES
OPEL DELPHI Z14XE/Z16X6	YES	YES
OPEL IAW MARELLI MULTIJET	YES	YES
ROVER BOSCH EDC15C DDE	YES	YES
RENAULT 1.9 CDI BOSCH EDC15C2	YES	YES
RENAULT DELPHI DCI	YES	YES
RENAULT MARELLI IAW 5NR	YES	YES
VOLVO V40 1.9 EDC15C3	YES	YES

Compatible car models:

Alfa Romeo

145 1.4 Bosch M1.5.5	156 1.9 JTD Bosch EDC15C7
145 1.6 Bosch M1.5.5	156 2.4 JTD Bosch EDC15C7
146 1.4 Bosch M1.5.5	166 2.4 JTD Bosch EDC15C7
146 1.6 Bosch M1.5.5	147 1.6 Bosch ME7.3.1
146 1.8 Bosch M1.5.5	147 2.0 TS Bosch ME7.3.1
146 2.0 Bosch M1.5.5	156 1.6 Bosch ME7.3.1
156 1.6 Bosch M1.5.5	156 1.8 Bosch ME7.3.1
156 1.8 Bosch M1.5.5	156 2.0 Bosch ME7.3.1
156 2.0 Bosch M1.5.5	166 2.0 Bosch ME7.3.1
166 2.0 Bosch M1.5.5	166 2.5 Bosch ME7.3.1
166 2.0 Bosch M1.5.5	166 3.0 Bosch ME7.3.1
GTV 1.8 TS 16V Bosch M1.5.5	GTV 2.0 TS 16V Bosch ME7.3.1
GTV 2.0 TS 16V Bosch M1.5.5	GTV 3.0 TS 16V Bosch ME7.3.1
GTV 3.0 TS 16V Bosch M1.5.5	Spider 2.0 TS 16V Bosch ME7.3.1
Spider 1.8 TS Bosch M1.5.5	Spider 3.0 TS 16V Bosch ME7.3.1
Spider 2.0 TS 16V Bosch M1.5.5	156 2.0 Bosch ME3.1
Spider 3.0 TS 16V Bosch M1.5.5	166 2.5 V6 24V Bosch ME3.1
145 1.9 JTD Bosch EDC15C5	GTV 3.0 V6 24V Bosch ME3.1
146 1.9 JTD Bosch EDC15C5	Spider 3.0 V6 24V Bosch ME3.1
156 1.9 JTD Bosch EDC15C5	156 2.5 Bosch ME2.1
156 2.4 JTD Bosch EDC15C5	166 2.0 V6 Turbo Bosch ME2.1
166 2.4 JTD Bosch EDC15C5	166 2.5 V6 24V Bosch ME2.1
147 1.9 JTD 16V Bosch EDC15C7	166 3.0 V6 24V Bosch ME2.1
147 1.9 JTD 8V Bosch EDC15C7	

Audi

A3 1.9 TDi VP37 Bosch EDC15V	A4 1.9 TDi PD Bosch EDC15P
A3 1.9 TDi VP37 Bosch EDC15VM	A4 2.5 TDi VP44 Bosch EDC15P
A3 1.9 TDi VP37 Bosch EDC15VM-1M	A6 2.5 TDi VP44 Bosch EDC15P
A4 1.9 TDi VP37 Bosch EDC15V	A8 2.5 TDi VP44 Bosch EDC15P
A4 1.9 TDi VP37 Bosch EDC15VM	Allroad Quattro 2.5 TDi V6 Bosch EDC15P
A4 1.9 TDi VP37 Bosch EDC15VM-1M	A3 1.8T ME7.5
A6 1.9 TDi PD Bosch EDC15P	A4 1.8T ME7.5
A6 1.9 TDi VP37 Bosch EDC15V	A6 1.8T ME7.5
A6 1.9 TDi VP37 Bosch EDC15VM	S3 1.8T ME7.5
A6 1.9 TDi VP37 Bosch EDC15VM-1M	TT 1.8T ME7.5
A2 1.4 TDi PD Bosch EDC15P	EDC15VM+
A3 1.9 TDi PD Bosch EDC15P	

BMW

Series 3 (E46) 2.0 D (318d) Bosch DDE3.0	Z3 Roadster 2.0 Siemens MS41
Series 5 (E39) 2.0 D Bosch EDC15	Z3 Roadster 2.8 Siemens MS41
Series 3 (E36) 2.0 i Siemens MS41	Series 3 (E46) 3.0 D Bosch DDE4.0
Series 3 (E36) 2.5 i Siemens MS41	Series 5 (E39) 2.5 D Bosch DDE4.0
Series 3 (E36) 2.8 i Siemens MS41	Series 5 (E39) 3.0 D Bosch DDE4.0
Series 5 (E39) 2.0 i Siemens MS41	Series 7 (E38) 3.0 D Bosch DDE4.0
Series 5 (E39) 2.5 i Siemens MS41	Series X5 (E53) 3.0 D Bosch DDE4.0
Series 7 (E38) 2.8i Siemens MS41	Series 3 (E36) 2.0i Siemens Ms43

Series 3 (E36) 2.5i Siemens Ms43
Series 3 (E36) 2.3i Siemens Ms43
Series 3 (E36) 2.8i Siemens Ms43
Series 3 (E36) 3.0i Siemens Ms43
Series 3 (E36) 3.2i Siemens Ms43
Series 5 (E46) 2.0i Siemens Ms43
Series 5 (E46) 2.5i Siemens Ms43

Series 5 (E46) 2.3i Siemens Ms43
Series 5 (E46) 2.8i Siemens Ms43
Series 5 (E46) 3.0i Siemens Ms43
Series 5 (E46) 3.2i Siemens Ms43
Series 3 (E36) 1.8 i Bosch ME5.2.1b
Z3 Roadster 1.9 Bosch ME5.2.1b

Chrysler

Grand Cherokee 2.7 CRD Bosch EDC15C2
Jeep Cherokee 2.5 CRD Bosch EDC15C2
Jeep Cherokee 2.8 CRD Bosch EDC15C2

PT Cruiser 2.2 CRD Bosch EDC15C2
Voyager 2.5 CRD Bosch EDC15C2

Citroen

Berlingo 2.0 HDI Bosch EDC15C2
C5 2.0 HDI Bosch EDC15C2
C5 2.2 HDI Bosch EDC15C2
C8 2.0 HDI Bosch EDC15C2
Evasion 2.0 HDI Bosch EDC15C2
Jumper 2.0 HDI Bosch EDC15C2
Jumper 2.2 HDI Bosch EDC15C2
Jumper 2.8 HDI Bosch EDC15C7

Jumpy 2.0 HDI Bosch EDC15C2
Picasso 2.0 HDI Bosch EDC15C2
Synergie 2.0 HDI Bosch EDC15C2
Xantia 2.0 HDI Bosch EDC15C2
Xsara 2.0 HDI Bosch EDC15C2
Xsara Picasso 2.0 HDI Bosch EDC15C2

Ferrari

Modena 3.6 Bosch ME7.3H4

Fiat

Bravo/Brava 1.2 Bosch M1.5.5
Bravo/Brava 1.9 JTD Bosch EDC15C5
Multipla 1.9 JTD Bosch EDC15C5
Marea 1.9 JTD Bosch EDC15C5
Marea 2.4 JTD Bosch EDC15C5
Punto 1.9 JTD Bosch EDC15C6
Punto 1.9 JTD Bosch EDC15C7
Bravo/Brava 1.9 JTD Bosch EDC15C7
Doblo 1.9 JTD Bosch EDC15C7
Ducato 2.0 JTD Bosch EDC15C7
Ducato 2.3 JTD Bosch EDC15C7
Ducato 2.8 JTD Bosch EDC15C7
Marea 1.9 JTD Bosch EDC15C7

Marea 2.4 JTD Bosch EDC15C7
Multipla 1.9 JTD Bosch EDC15C7
Scudo 2.0 JTD Bosch EDC15C7
Stilo 1.9 JTD Bosch EDC15C7
Punto 1.2 Bosch ME7.2.1 Euro2
Punto 1.2 Bosch ME7.H3
Stilo 2.4 Bosch ME7.3.1
Ulysse 2.0 JTD 16V Bosch EDC15C2
Ulysse 2.2 JTD 16V Bosch EDC15C2
Bravo/Brava 2.0 Bosch ME7.3.1
Bravo/Brava 2.0 20V Bosch ME3.1
Coupe 2.0 20V Bosch ME3.1
Marea 2.4 MDI 20V Bosch ME3.1

Ford

Galaxy 1.9 TDi PD Bosch EDC15P

Honda

Civic EDC15C-7

Hyundai

Accent 1.5 CRDI Bosch EDC15C2
Elantra 2.0 CRDI Bosch EDC15C2
Matrix 1.5 CRDI Bosch EDC15C2

Santa Fe 2.0 CRDI Bosch EDC15C2
Trajet 2.0 CRDI Bosch EDC15C2

Izuzu

2.0 16V DI Bosch EDC15M

Kia

Carens 2.0 CRDi 16V Bosch EDC15C2
Sorento 2.5 CRDi Bosch EDC15C2

Lancia

K 2.4 JTD Bosch EDC15C5
Lybra 1.9 JTD Bosch EDC15C5
Lybra 2.4 JTD Bosch EDC15C5
Z 2.0 JTD Bosch EDC15C5
Lybra 1.9 JTD Bosch EDC15C7
Lybra 2.4 JTD Bosch EDC15C7
Thesis 2.4 JTD Bosch EDC15C7

Y 1.2 Bosch ME7.2.1 Euro2
Y 1.2 Bosch ME7.H3
Phedra 2.0 JTD Bosch EDC15C2
Phedra 2.2 JTD Bosch EDC15C2
Lybra 2.0 Bosch ME7.3.1
Thesis 2.0 Turbo Bosch ME7.3.1
Lybra 2.0 i 20V Bosch ME3.1

Mini

Cooper 2.0 D Bosch EDC15C2 DDE

Mercedes Benz

A-Class 1.7 CDI Bosch EDC15C6
C-Class (W201) 2.2 CDI Bosch EDC15C6
C-Class (W201) 2.7 CDI Bosch EDC15C6
C-Class (W203) 2.0 CDI Bosch EDC15C6
C-Class (W203) 2.2 CDI Bosch EDC15C5
C-Class (W203) 2.2 CDI Bosch EDC15C6
C-Class (W203) 2.7 CDI Bosch EDC15C6
C-Class (W203) 3.2 CDI Bosch EDC15C6
E-Class (W210) 2.0 CDI Bosch EDC15C6
E-Class (W210) 2.2 CDI Bosch EDC15C6
E-Class (W210) 2.7 CDI Bosch EDC15C6
E-Class (W210) 3.2 CDI Bosch EDC15C6
G-Class 2.7 CDI Bosch EDC15C6
G-Class 4.0 CDI Bosch EDC15C6

M-Class 2.7 CDI Bosch EDC15C6
ML-Class 2.7 CDI Bosch EDC15C6
ML-Class 4.0 CDI Bosch EDC15C6
S-Class (W280) 3.2 CDI Bosch EDC15C6
S-Class (W280) 4.0 CDI Bosch EDC15C6
V-Class 2.0 CDI Bosch EDC15C6
V-Class 2.2 CDI Bosch EDC15C6
Vito 2.2 CDI Bosch EDC15C6
A-Class 1.7 CDI Bosch EDC15C5
C-Class (W201) 2.2 CDI Bosch EDC15C5
M-Class 3.2 CDI Bosch EDC15C
Sprinter 2.2 CDI Bosch EDC15C
V-Class 2.2 CDI Bosch EDC15C5
Vito 2.2 CDI Bosch EDC15C5

Nissan

Almera Tino 2.0 Bosch EDC15C2
X-Trail 2.2 Bosch EDC15C2

Opel

Vivaro 1.9 16V DI Bosch EDC15C2
Astra F (4) 1.7 16V DTI Bosch EDC15M
Astra F (4) 2.0 16V DI Bosch EDC15M
Astra F (4) 2.2 16V DI Bosch EDC15M
Astra G 1.7 16V DI Bosch EDC15M
Astra G 2.0 16V DI Bosch EDC15M
Frontera 2.2 DTI Bosch EDC15M
Vectra B 1.7 16V DI Bosch EDC15M
Vectra B 2.0 16V DI Bosch EDC15M
Vectra C 2.0 16V DI Bosch EDC15M
Vectra C 2.0 16V DTI Bosch EDC15M
Zafira 2.0 16V DI Bosch EDC15M
Coupe Turbo --- ME1.5.5
Astra F (4) 1.8 16V Siemens Simtec70
Astra F (4) 2.0 16V Siemens Simtec70
Astra G 1.8 16V Siemens Simtec70
Astra G 2.0 16V Siemens Simtec70

Omega B 2.0 16V Siemens Simtec70
Vectra B 1.8 16V Siemens Simtec70
Vectra B 2.0 16V Siemens Simtec70
Vectra C 1.8 16V Siemens Simtec70
Vectra C 2.0 16V Siemens Simtec70
Zafira 1.8 16V Siemens Simtec70
Zafira 2.0 16V Siemens Simtec70
Astra F (4) 1.7 16V DTI Delco Y17DT
Corsa B 1.7 16V Delco Y17DT
Zafira 1.7 16V Delco Y17DT
Astra G 1.2 16V Bosch M1.5.5
Corsa B 1.0 12V Bosch M1.5.5
Corsa B 1.2 16V Bosch M1.5.5
Corsa C 1.0 12V Bosch M1.5.5
Corsa C 1.2 16V Bosch M1.5.5
Astra F (4) 1.8 16V Siemens Simtec90
Astra F (4) 2.0 16V Siemens Simtec90

Astra G 1.8 16V Siemens Simtec90
Astra G 2.0 16V Siemens Simtec90
Omega B 2.0 16V Siemens Simtec90
Vectra B 1.8 16V Siemens Simtec90
Vectra B 2.0 16V Siemens Simtec90
Vectra C 1.8 16V Siemens Simtec90
Vectra C 2.0 16V Siemens Simtec90

Zafira 1.8 16V Siemens Simtec90
Zafira 2.0 16V Siemens Simtec90
Astra F (4) 1.4 16V Delco
Astra F (4) 1.6 16V Delco
Vectra B 1.4 16V Delco
Vectra B 1.6 16V Delco

Peugeot

206 2.0 HDI Bosch EDC15C2
306 2.0 HDI Bosch EDC15C2
307 2.0 HDI 110PS Bosch EDC15C2
406 2.0 HDI Bosch EDC15C2
406 2.2 HDI Bosch EDC15C2
607 2.0 HDI Bosch EDC15C2

607 2.2 HDI Bosch EDC15C2
807 2.0 HDI Bosch EDC15C2
807 2.2 HDI Bosch EDC15C2
Boxer 2.0 HDI Bosch EDC15C2
Expert 2.0 HDI Bosch EDC15C2
Partner 2.0 HDI Bosch EDC15C2

Renault

Espace 1.9 dCi Bosch EDC15C2
Espace 2.2 dCi Bosch EDC15C2
Kangoo 1.9 dCi Bosch EDC15C2
Laguna 1.9 dCi Bosch EDC15C2

Megane 1.9 dCi Bosch EDC15C2
Scenic 1.9 dCi Bosch EDC15C2
Scenic 1.9 dTi Bosch EDC15C2
Trafic 1.9 dCi Bosch EDC15C2

Rover

75 2.0 CDT Bosch DDE4.0
75 Tourer 2.0 CDT Bosch DDE4.0
Land Rover Freelander 2.0 CDT Bosch DDE4.0

Seat

Alhambra 1.9 TDI VP37 Bosch EDC15V
Alhambra 1.9 TDI VP37 Bosch EDC15VM
Alhambra 1.9 TDI VP37 Bosch EDC15VM-1M
Cordoba 1.9 TDI VP37 Bosch EDC15V
Cordoba 1.9 TDI VP37 Bosch EDC15VM
Cordoba 1.9 TDI VP37 Bosch EDC15VM-1M
Ibiza 1.9 TDI VP37 Bosch EDC15V
Ibiza 1.9 TDI VP37 Bosch EDC15VM
Ibiza 1.9 TDI VP37 Bosch EDC15VM-1M
Leon 1.9 TDI VP37 Bosch EDC15V
Leon 1.9 TDI VP37 Bosch EDC15VM
Leon 1.9 TDI VP37 Bosch EDC15VM-1M
Toledo 1.9 TDI VP37 Bosch EDC15V

Toledo 1.9 TDI VP37 Bosch EDC15VM
Toledo 1.9 TDI VP37 Bosch EDC15VM-1M
Alhambra 1.8T ME7.5
Cordoba 1.8T ME7.5
Ibiza 1.8T ME7.5
Leon 1.8T ME7.5
Toledo 1.8T ME7.5
Alhambra 1.9 TDI PD Bosch EDC15P
Cordoba 1.9 TDI PD Bosch EDC15P
Ibiza 1.9 TDI PD Bosch EDC15P
Leon 1.9 TDI PD Bosch EDC15P
Toledo 1.9 TDI PD Bosch EDC15P

Skoda

Fabia 1.9 TDI VP37 Bosch EDC15V
Fabia 1.9 TDI VP37 Bosch EDC15VM
Fabia 1.9 TDI VP37 Bosch EDC15VM-1M
Octavia 1.9 TDI VP37 Bosch EDC15V
Octavia 1.9 TDI VP37 Bosch EDC15VM

Octavia 1.9 TDI VP37 Bosch EDC15VM-1M
Octavia 1.8T ME7.5
Superb 1.8T ME7.5
Fabia 1.9 TDI PD Bosch EDC15P
Octavia 1.9 TDI PD Bosch EDC15P

Smart

MCC Smart 0.7 Bosch MEG1.1
MCC Smart CDI 0.9 CDI EDG15C5

Volkswagen

Bora 1.9 TDI VP37 Bosch EDC15V
Bora 1.9 TDI VP37 Bosch EDC15VM
Bora 1.9 TDI VP37 Bosch EDC15VM-1M
Golf 4 1.9 TDI VP37 Bosch EDC15V
Golf 4 1.9 TDI VP37 Bosch EDC15VM
Golf 4 1.9 TDI VP37 Bosch EDC15VM-1M
New Beetle 1.9 TDI VP37 Bosch EDC15V
New Beetle 1.9 TDI VP37 Bosch EDC15VM
New Beetle 1.9 TDI VP37 Bosch EDC15VM-1M
Passat 1.9 TDI VP37 Bosch EDC15V
Passat 1.9 TDI VP37 Bosch EDC15VM
Passat 1.9 TDI VP37 Bosch EDC15VM-1M
Sharan 1.9 TDI VP37 Bosch EDC15V
Sharan 1.9 TDI VP37 Bosch EDC15VM
Sharan 1.9 TDI VP37 Bosch EDC15VM-1M
Sharan 1.8T ME7.

Bora 1.9 TDI PD Bosch EDC15P
Golf 4 1.9 TDI PD Bosch EDC15P
Lupo 1.2 TDI PD Bosch EDC15P
Lupo 1.4 TDI PD Bosch EDC15P
New Beetle 1.9 TDI PD Bosch EDC15P
Passat 1.9 TDI PD Bosch EDC15P
Polo 1.4 TDI PD Bosch EDC15P
Polo 1.9 TDI PD Bosch EDC15P
Sharan 1.9 TDI PD Bosch EDC15P
Passat 2.5 TDI VP37 Bosch EDC15P
T4 Bus 2.5 TDI VP44 Bosch EDC15P
Bora 1.8T ME7.5
Golf 4 1.8T ME7.5
New Beetle 1.8T ME7.5
Passat 1.8T ME7.5

Volvo

V40 2.0 TDI Bosch EDC15C3